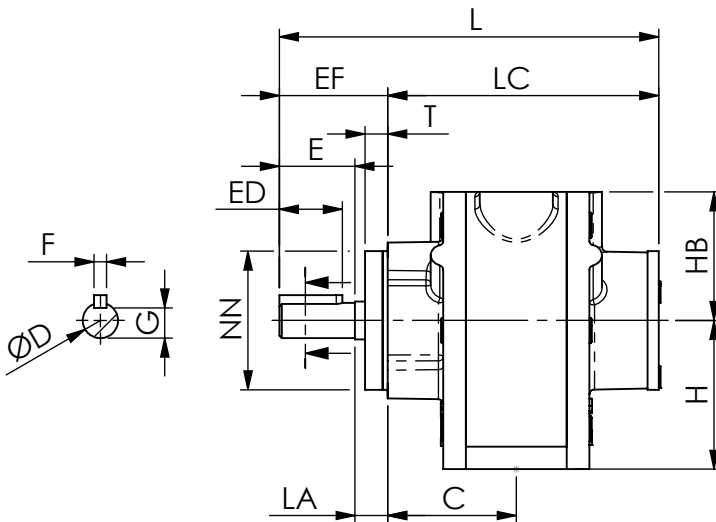
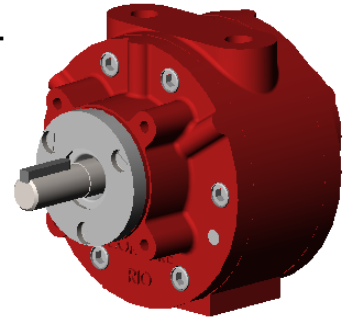
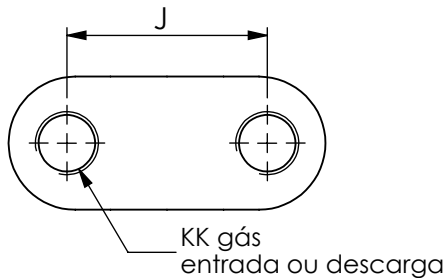
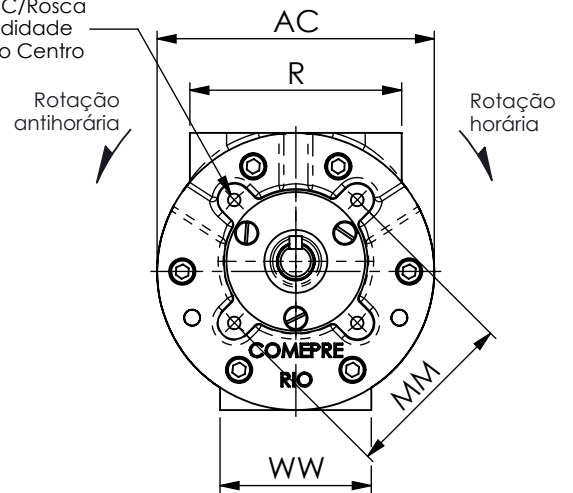


Motor pneumático de palheta reversível ou de rotação horária ou antihorária

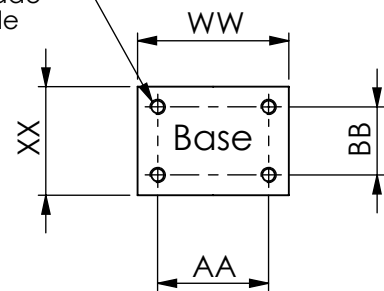


4 furos SS - C/Rosca
V - Profundidade
MM - Ø do Centro

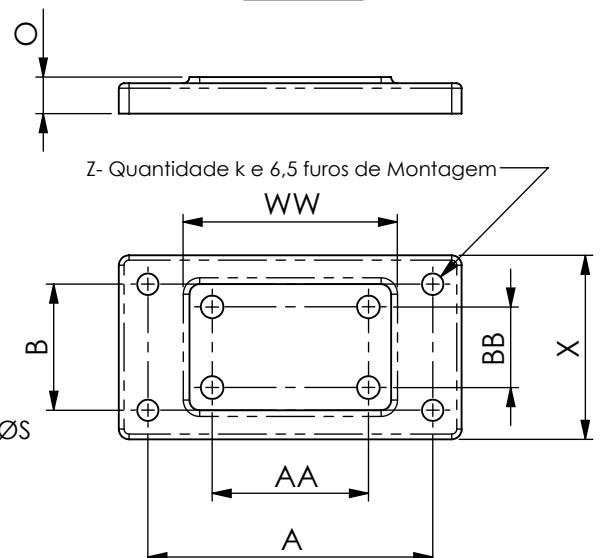
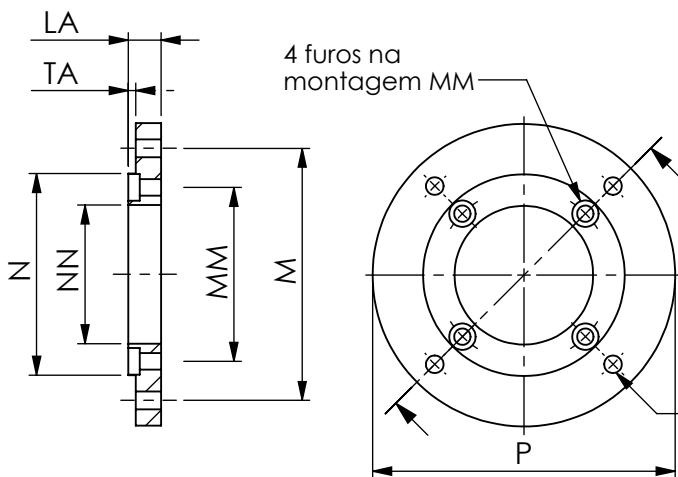


Flange

SS - da rosca
V - profundidade
Z - quantidade

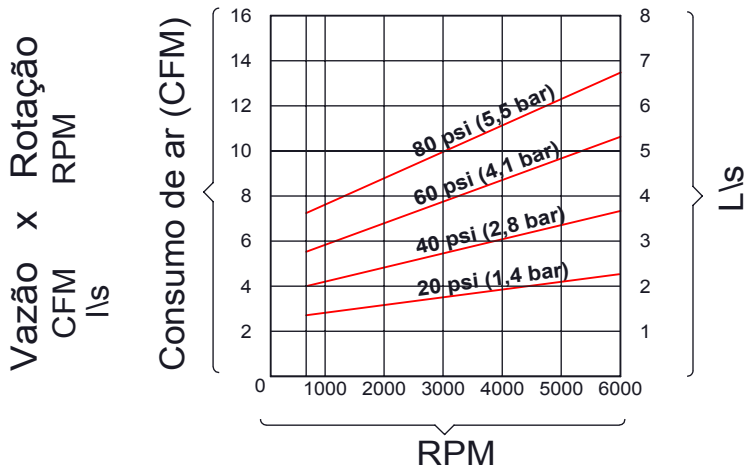
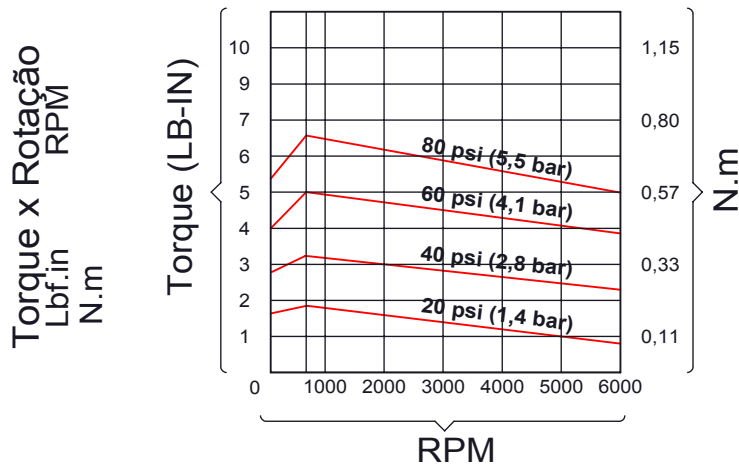
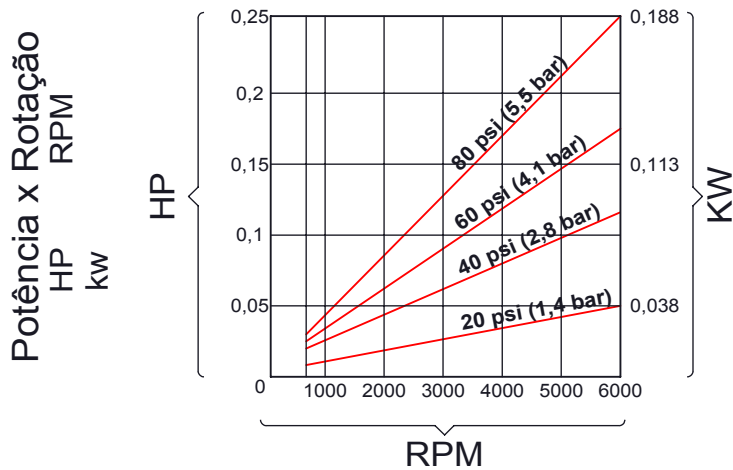


Base



Motor pneumático de palheta

- standard reversível VX50
- standard horário ou anti-horário MP11



Tipo	VX50
Potência	0,25 HP
Medidas	
A	80
AA	44
AC	110
B	-----
BB	-----
C	43
D - 0,00	14
E	31
ED	25
EF	44
F	5
G	12
H	60
HB	52
J	53
KK gás	1/4"
L	135
LA	13
LC	90,5
M	85
MM	69
N	70
NN	55
O	12
P	105
R	86
S	7
SS	M6
T	9
TA	3
V	20
WW	60
X	30
XX	23
Z	2
Peso	3,9 Kg